

Optional Accessory

ATB02

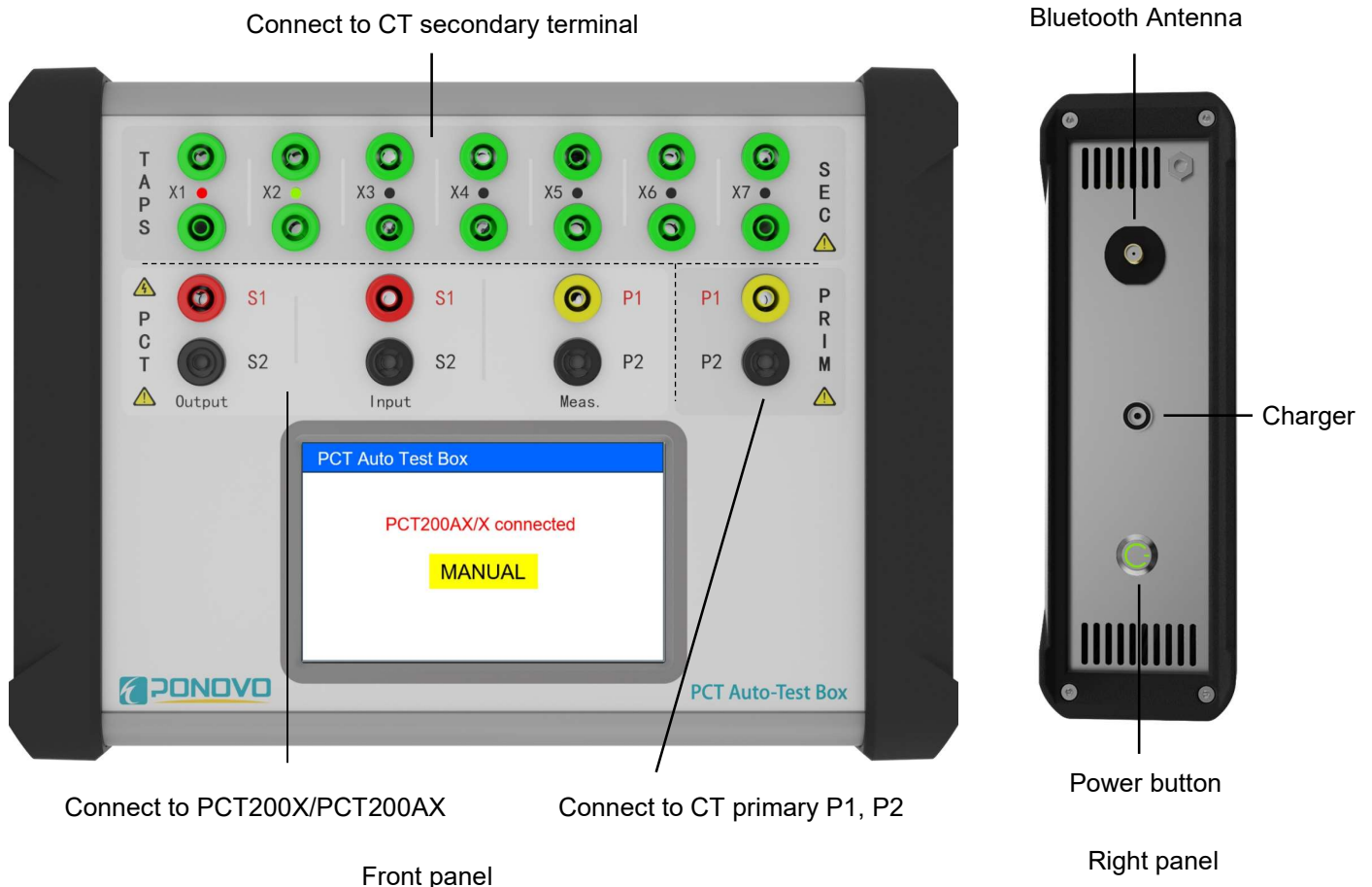
PCT Auto-Test Box for PCT200 Portable CT/PT Testing System

ATB02 is an accessory for the PCT200X/PCT200AX Portable CT/PT Testing System allows automatic testing of multi-core/ratio current transformers. ATB02 is connected to multi-taps of the current transformer, and the PCT200X/PCT200AX CT/PT Testing System. This allows the transformer ratios of all winding combinations to be automatically tested with the PCT200X/PCT200AX CT/PT Testing System.



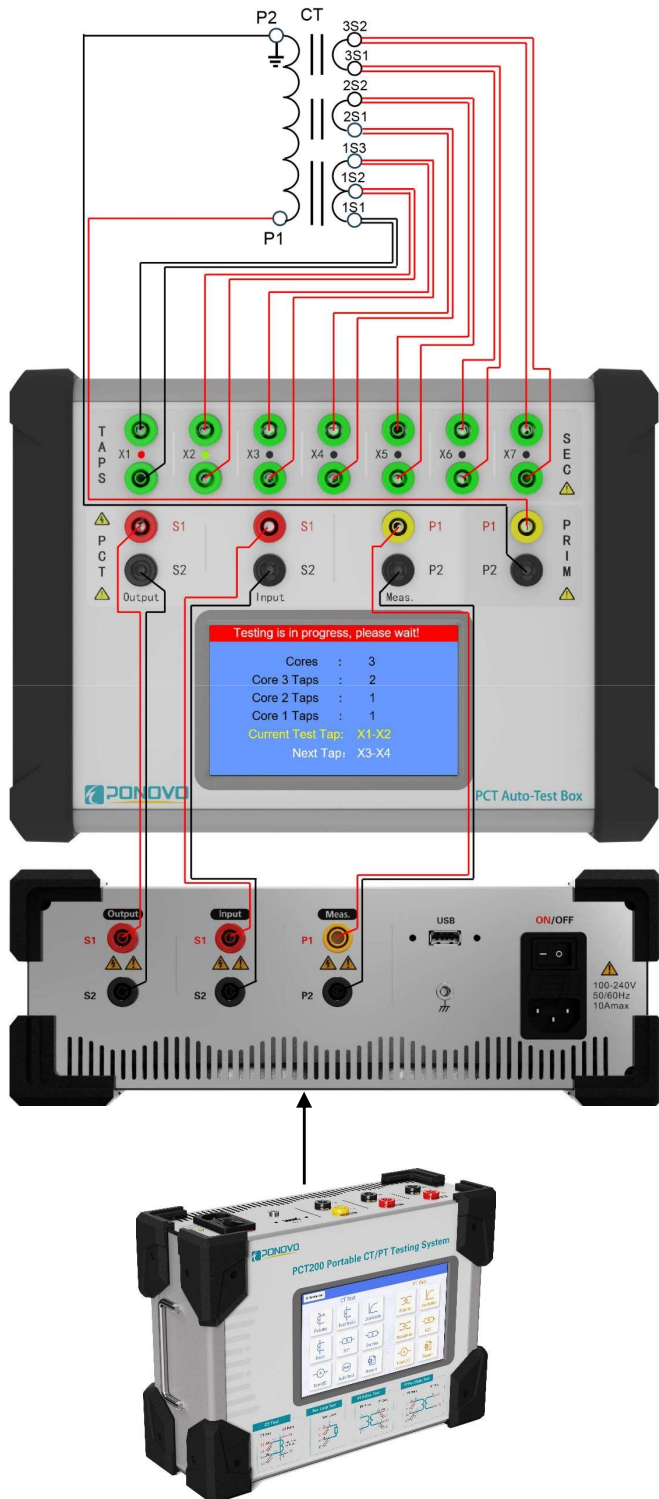
Main Features

- Supported max three-core, supported max six-tap connections for the secondary side of the current transformer.
- Automatic check to ensure correct wiring.
- Fully automated testing with no need for re-wiring in multi-taps test.
- Supports AC power supply.
- Built-in batteries can power it and work for a day.
- Can work while charging.



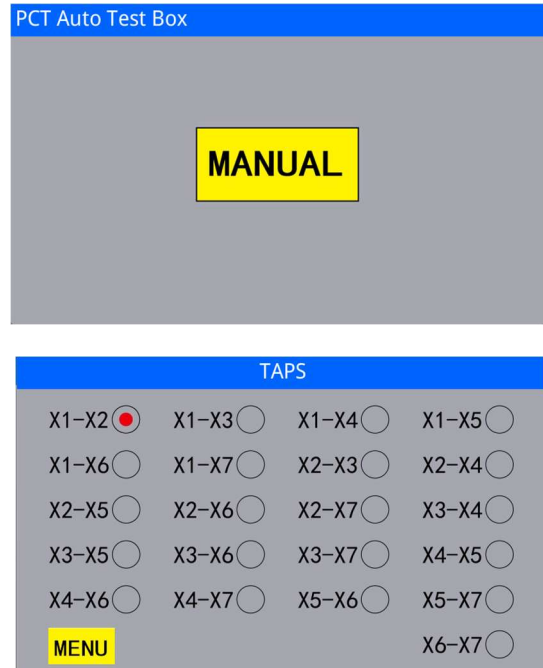
Sample Wiring Connection

3 cores 4 taps connection between ATB02 PCT Auto-Test Box and PCT200 Portable CT/PT Testing System for multi-ratio current transformer Test.



Software Interface

➤ ATB02 manual software interface



➤ ATB02 auto-test software interface

